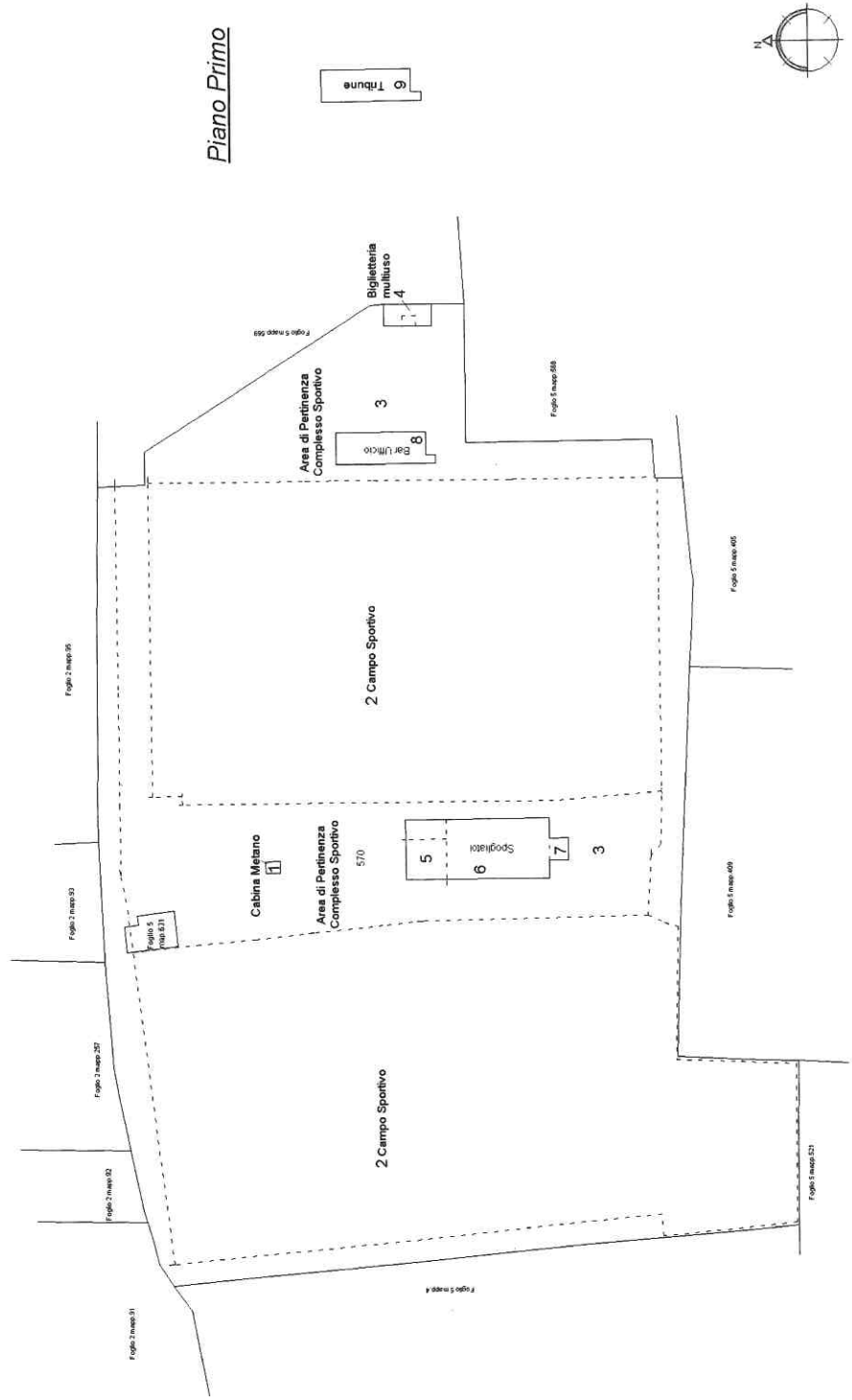


PLANIMETRIA GENERALE

Piano Terra

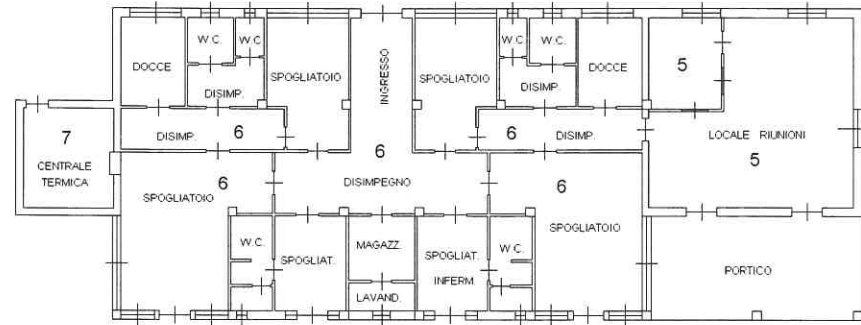
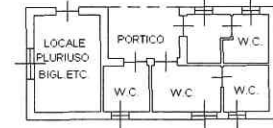
Piano Primo



SCHEDA 2/2

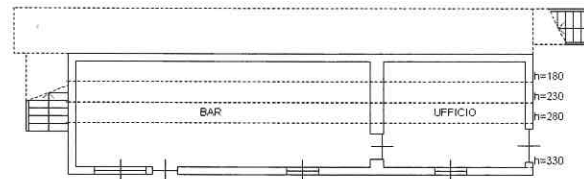
PIANO TERRA H=2.70  
4-LOC. BIGLIETTERIA PLURIUSO

PIANO TERRA H=2.70  
5-LOCALE RIUNIONI  
6-SPOGLIATOI  
7-CENTRALE TERMICA



PIANO TERRA  
8-BAR/UFFICIO

PIANO TERRA H=2.00  
1-CABINA METANO



PIANO PRIMO  
9-TRIBUNE COPERTE

